

# Specifications:

## T100-F

### TURBOTWIN™

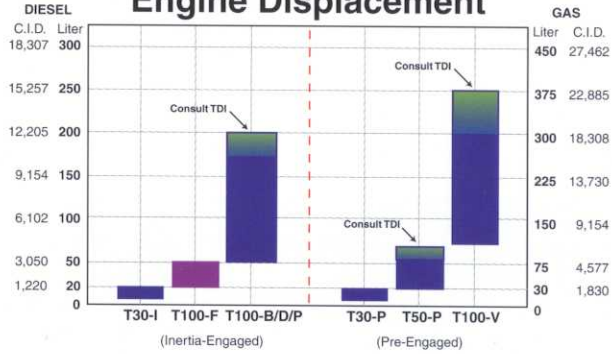
## Engine Air Starters

An Economical Configuration of T100 for Medium-Range Engines from 20–50 Liters



*TDI's state-of-the-art manufacturing facility produces some of the world's most sophisticated turbine/compressor designs.*

## Starter Selection Chart Engine Displacement

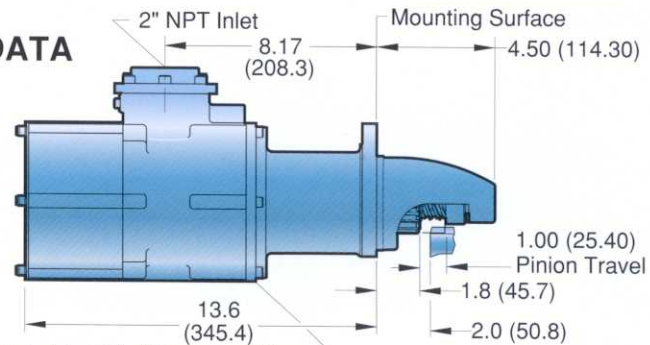


Consult your TDI Distributor and the TDI Selection Guide before choosing a TDI TURBOTWIN starter for any application.

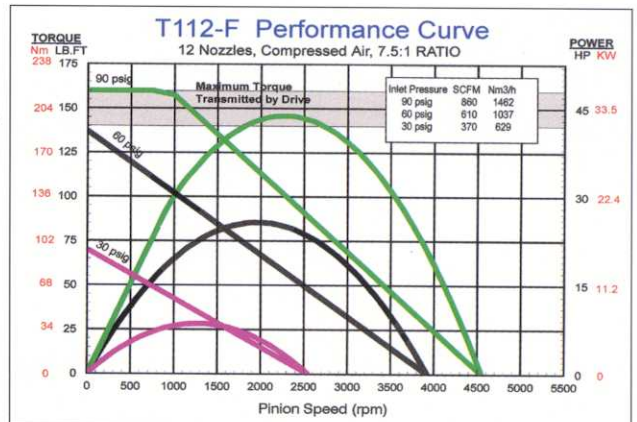
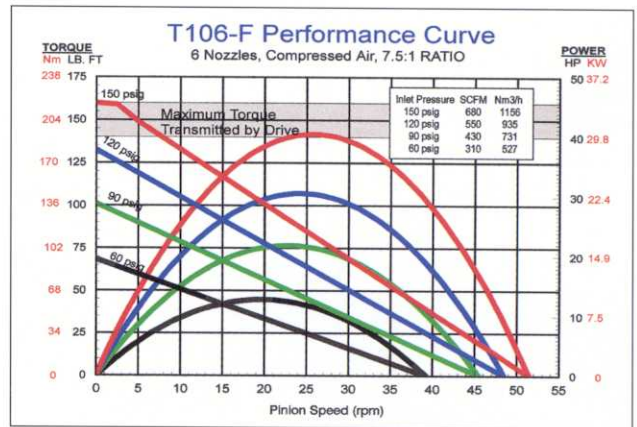
This selection chart shows basic starter capability by engine size. Note the chart shows four-stroke diesel engine size on the left and four-stroke, spark-ignited engine sizes on the right. Always consult TDI for application-specific capability.

## DIMENSIONAL DATA

TDI TURBOTWIN  
T106-F/T112-F



Motor may be rotated to (12) different positions relative to drive opening for best inlet port location



# SPECIFICATIONS

**Engines:** Starts Engines up to 50 Liters (3000 CID)

**Design Configuration:** Inline; Inertia-Engaged

**Common Pinion Configuration:** 6/8 Pitch, 12 Tooth (2 inch pitch diameter pinion)

**Mounting:** SAE 3 Flange, Standard

**Horsepower:**  
 T106-F: 44 hp (33 kW) Max. at 150 psig (10.3 BAR)  
 T112-F: 44 hp (33 kW) Max. at 90 psig (6.2 BAR)

**Weight:** 42 lbs. (19 kg)

**Operating Pressure Range:**

**Rotation:** (Facing Pinion Orientation) Righthand/clockwise and Lefthand/counter clockwise

**Air/Gas Supply:** Compressed Air or Natural Gas

**Lubrication:** Grease-Packed For Life, None Required

**Gear Ratio:** 7.5:1

**Custom:** Other models and configurations available. Consult your local TDI distributor.

MODEL	NOZZLES	PSI	BAR
T106-F	6	60 – 150	4.1 – 10.3
T112-F	12	30 – 90	2 – 6.2

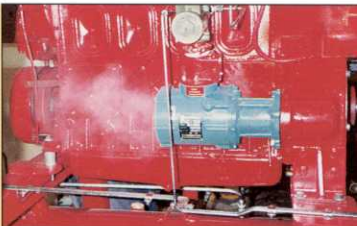
For applications in the 60–90 psig (4.1–6.2 BAR) range, consult your TDI distributor for best nozzle configuration.

*T100-F's grease-packed for life feature eliminates wear, reduces maintenance, and delivers a significantly longer starting life.*



**T100-F responsiveness and reliability** make sure you're on-line moving gas immediately.

**T100-F Provides Big Gear-Trane Cranking Power in a Small Package**



*This T100-F, mounted on a Detroit Diesel fire pump gas engine, provides the extended 180-second cranking cycle required by the U.S. Coast Guard.*



**The large channels of TDI turbine blades** create an open air path that allows contaminants to pass through rather than get lodged in the starter and cause breakdowns.