

Specifications:

T100-B T100-P

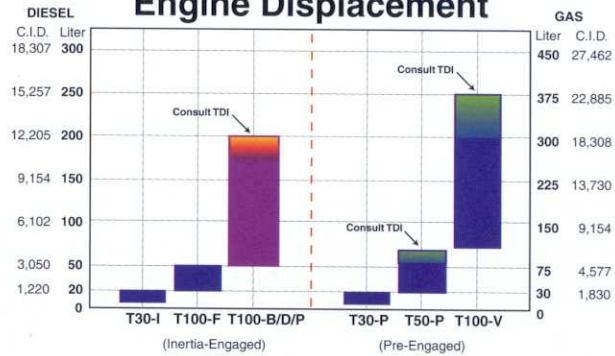
TURBOTWIN™ Engine Air Starters

The Most Popular T100 Configurations



TDI turbine designs feature larger air channels to optimize starting power.

Starter Selection Chart Engine Displacement

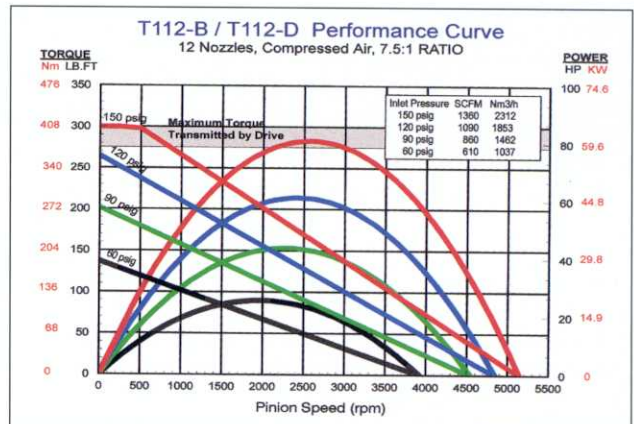
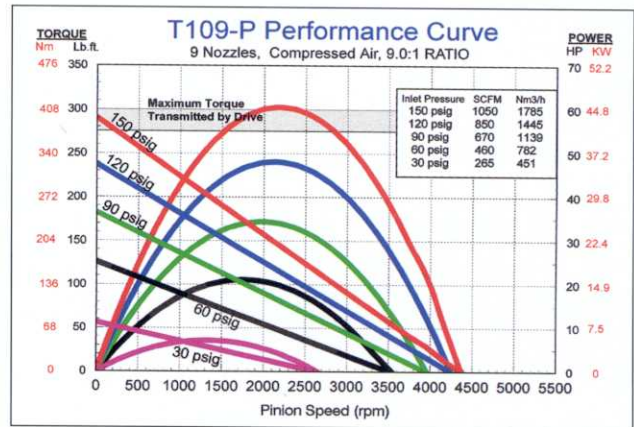
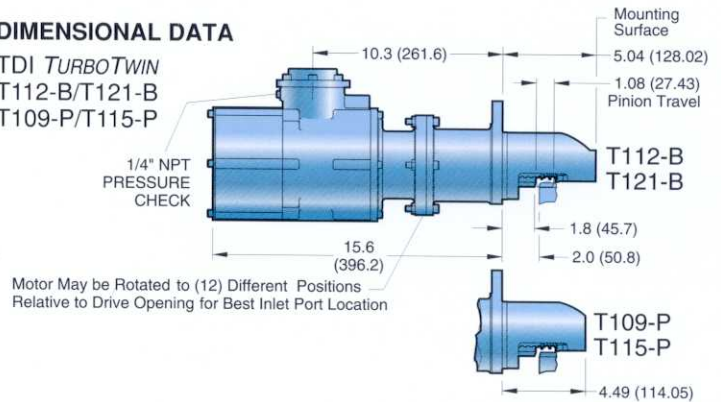


Consult your TDI Distributor and the TDI Selection Guide before choosing a TDI TURBOTWIN starter for any application.

This selection chart shows basic starter capability by engine size. Note the chart shows four-stroke diesel engine size on the left and four-stroke, spark-ignited engine sizes on the right. Always consult TDI for application-specific capability.

DIMENSIONAL DATA

TDI TURBOTWIN
T112-B/T121-B
T109-P/T115-P



For low-pressure version curve, see T121-D performance curve on page 10.

SPECIFICATIONS

Engines: Starts Engines from 50 (3000 CID) up to 250 Liters (15,000 CID)

Design Configuration: Inline; Inertia-Engaged

Common Pinion Configuration: 6/8 Pitch, 12 Tooth (2-inch pitch diameter pinion)

Mounting: SAE 3 Mounting Flange

Horsepower:
 T112-B: 80 hp (60 kW) Cranking Power at 150 psig (10.3 BAR) Max.
 T121-B: 80 hp (60 kW) Cranking Power at 90 psig (6.2 BAR) Max.
 T109-P: 60 hp (41 kW) Cranking Power at 150 psig (10.3 BAR) Max.

Weight: 48 lbs. (22 kg)

Operating Pressure Range:

MODEL	NOZZLES	PSI	BAR
T-109-P	9	30 – 150	2 – 10.3
T112-B	12	60 – 150	4.1 – 10.3
T121-B	21	30 – 90	2 – 6.2

For applications in the 60–90 psig (4.1–6.2 BAR) range, consult your TDI distributor for best nozzle configuration.

Rotation: (Facing Pinion Orientation) Righthand/clockwise and Lefthand/counter clockwise

Air/Gas Supply: Compressed Air or Natural Gas

Lubrication: Grease-Packed For Life, None Required

Gear Ratio:
 T112-B/T121-B: 7.5:1
 T109-P: 9.0:1

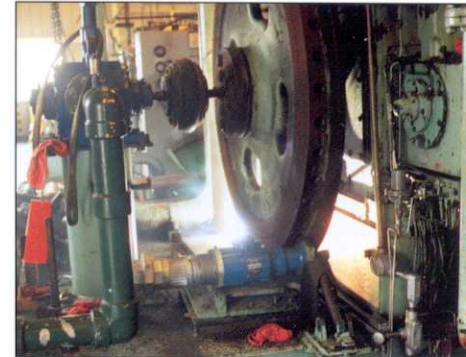
Custom: Other models and configurations available. Consult your local TDI distributor.

T100-B/P's grease-packed for life feature eliminates wear, reduces maintenance, and delivers a significantly longer starting life.

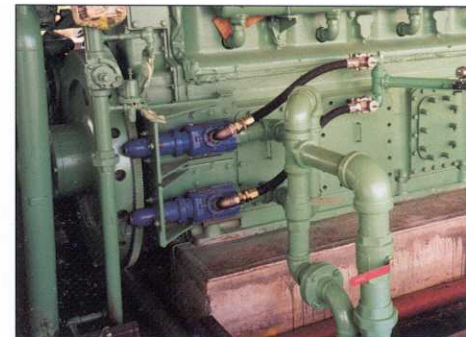
Power and Reliability for Engines up to 300 Liters and Larger.



The TDI TURBOTWIN Starter Model T100-B offers simplicity and a perfect fit, even within the tightest installations. (Shown here, a pair of Model T100-B starters installed on a 650 liter gas integral engine/compressor.)



Model T100-B mounted on a slow-speed spark-ignited engine.



T100-B dual starter mounted on a Worthington SL-10. Simple installation, power and reliability make the T100-B ideal for starting engines up to 300 liters.